

# TCX550

## Automatic Swing-Arm Tire Changer With Bead Press System



Архангельск (8182)63-90-72  
Астана (7172)727-132  
Астрахань (8512)99-46-04  
Барнаул (3852)73-04-60  
Белгород (4722)40-23-64  
Брянск (4832)59-03-52  
Владивосток (423)249-28-31  
Волгоград (844)278-03-48  
Вологда (8172)26-41-59  
Воронеж (473)204-51-73  
Екатеринбург (343)384-55-89

Иваново (4932)77-34-06  
Ижевск (3412)26-03-58  
Иркутск (395)279-98-46  
Казань (843)206-01-48  
Калининград (4012)72-03-81  
Калуга (4842)92-23-67  
Кемерово (3842)65-04-62  
Киров (8332)68-02-04  
Краснодар (861)203-40-90  
Красноярск (391)204-63-61  
Курск (4712)77-13-04  
Липецк (4742)52-20-81

Киргизия (996)312-96-26-47

Магнитогорск (3519)55-03-13  
Москва (495)268-04-70  
Мурманск (8152)59-64-93  
Набережные Челны (8552)20-53-41  
Нижний Новгород (831)429-08-12  
Новокузнецк (3843)20-46-81  
Новосибирск (383)227-86-73  
Омск (3812)21-46-40  
Орел (4862)44-53-42  
Оренбург (3532)37-68-04  
Пенза (8412)22-31-16

Казахстан (772)734-952-31

Пермь (342)205-81-47  
Ростов-на-Дону (863)308-18-15  
Рязань (4912)46-61-64  
Самара (846)206-03-16  
Санкт-Петербург (812)309-46-40  
Саратов (845)249-38-78  
Севастополь (8692)22-31-93  
Симферополь (3652)67-13-56  
Смоленск (4812)29-41-54  
Сочи (862)225-72-31  
Ставрополь (8652)20-65-13

Таджикистан (992)427-82-92-69

Сураут (3462)77-98-35  
Тверь (4822)63-31-35  
Томск (3822)98-41-53  
Тула (4872)74-02-29  
Тюмень (3452)66-21-18  
Ульяновск (8422)24-23-59  
Уфа (347)229-48-12  
Хабаровск (4212)92-98-04  
Челябинск (351)202-03-61  
Череповец (8202)49-02-64  
Ярославль (4852)69-52-93

<http://hunter.nt-rt.ru> || [hrr@nt-rt.ru](mailto:hrr@nt-rt.ru)

# TCX550 Tire Changer

## Automatic Swing-Arm Tire Changer With Patented Bead Press System

Designed for continuous heavy use, the Hunter TCX550 Automatic Swing-Arm Tire Changer services virtually everything from simple steel wheels to difficult low-profile and run-flat tires mounted on large, custom alloy wheels.





# Advanced Features Enhance Service of Performance Tires and Wheels

## Bead Press System

- The patented, wheel-centered Bead Press System aids in blocking and pressing stiff, low-profile tire beads into deep drop-center wheels.
- The BPS provides effortless assistance in mounting and demounting stiff sidewall tires and wheels up to 28" in diameter.

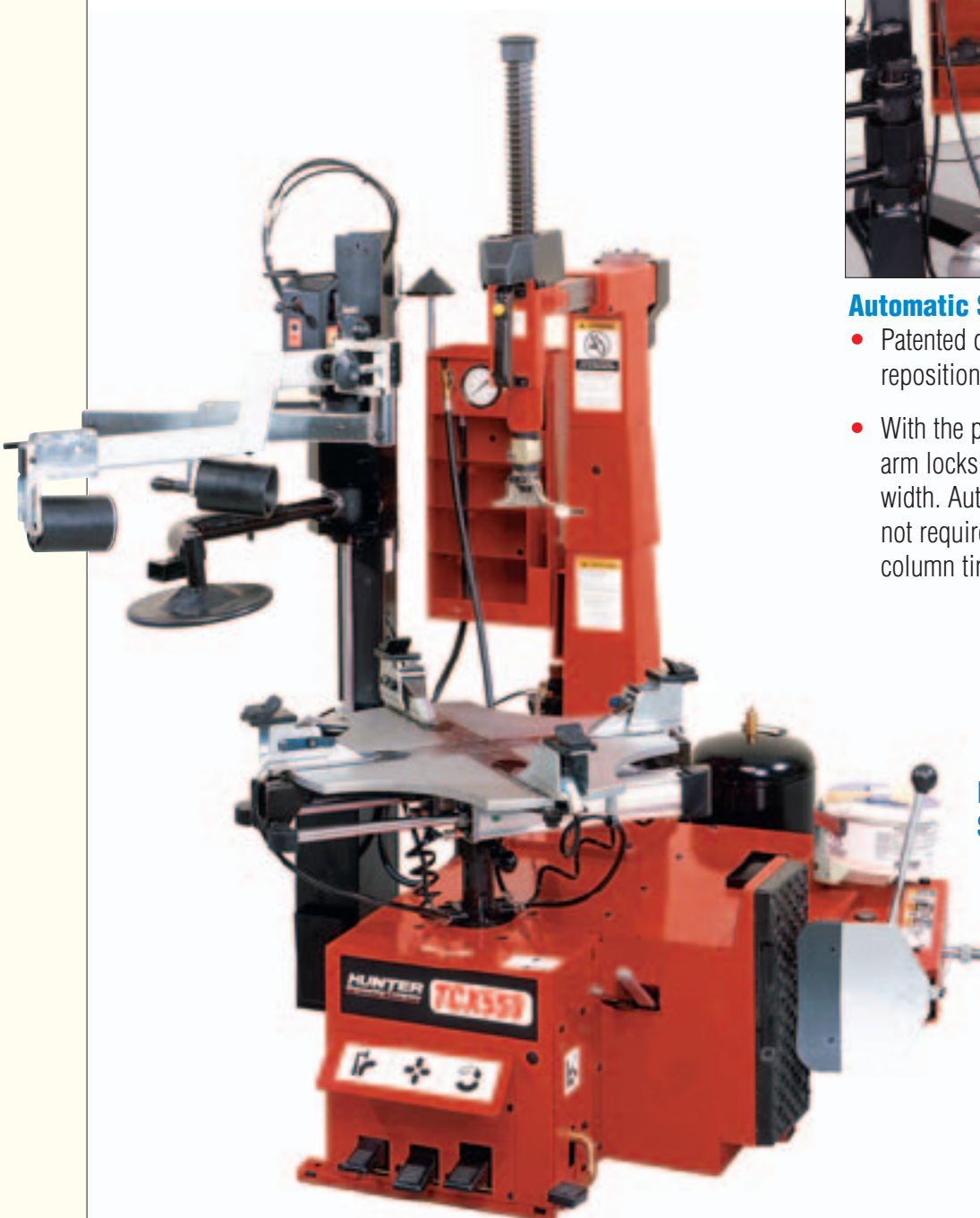


## Automatic Swing-Arm Column

- Patented design saves time by eliminating repositioning.
- With the push of a single button, the swing arm locks the preset wheel diameter and width. Automatic swing-arm design does not require the extra space used by tilt-column tire changers.

## Powerful Motor and Drive System

- The 220V, 1-phase, high-torque, drive system uses a 1-3 phase power inverter to drive a 220V, 3-phase motor. This unique system operates at a low speed with increased torque when servicing tough combinations and a faster rotational speed when required. An air-powered version is also available.

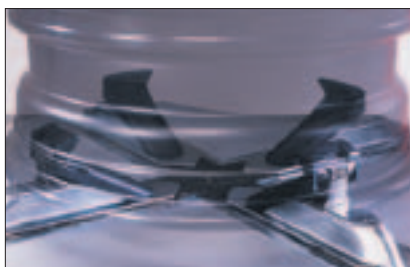


# TCX550 Standard Features



## Enhanced Clamping Table Handles Oversize Wheels

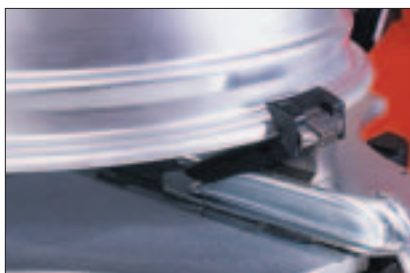
- Tabletop clamping system easily handles 12"- 28" wheels safely with standard outside clamping accessories.
- Radiused table design allows easy bottom bead access, while ensuring rigidity for large diameter wheels.
- Four self-centering clamps are actuated by heavy-duty pneumatic cylinders driving dual frame heavy-duty linkage. Chuck slides are nickel plated for longer life and better rim protection.



## Internal clamping for steel wheels

## Clamping Jaws for Steel or Alloy Wheels

- Hardened steel teeth firmly hold steel wheels internally.

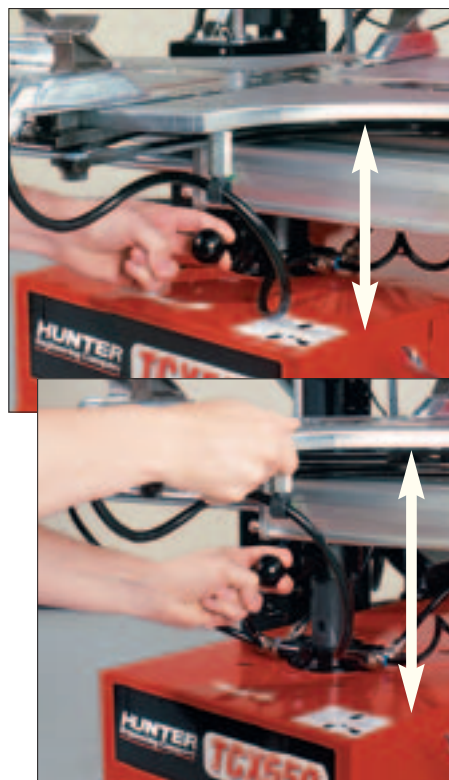


## External clamping for alloy wheels

- Nylon inserts protect alloy wheels when clamping externally.



- Add-on external clamping jaws increase capacity up to 28" wheel diameters.



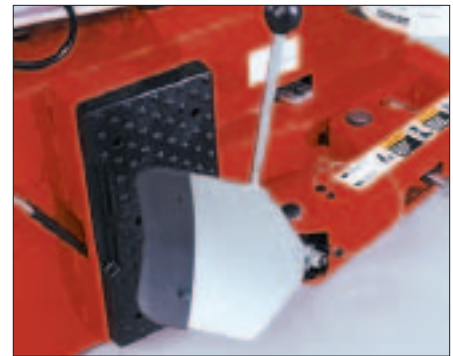
## Adjustable Clamping Table

Two work positions help service narrow and super-wide wheels and adjust to short or tall operators.



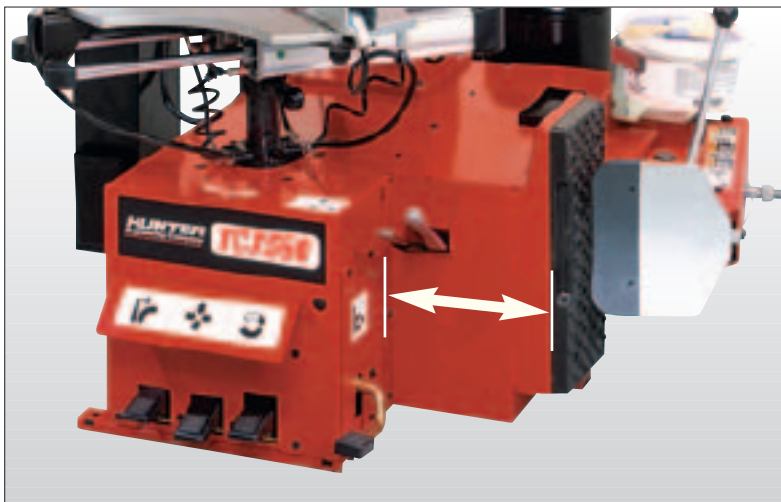
### Interchangeable Quick-Connect Mount/Demount Heads

Quick change steel and polymer mount/demount heads are designed with patented bayonet cam lock.



### Side-Mounted Bead Loosener

- Three-way adjustable shovel angle and enlarged wheel pad enable service on a wide range of custom wheels.
- Shovel protector sleeves are supplied standard for alloy wheel protection.



### Wide, Stable Base Structure

- Solid base ensures extra stability for servicing heavy, large diameter wheels.
- Tabletop remains clear of the side-mounted bead loosener.
- Side shovel operation pedal is located away from other pedals to ease and speed use.
- Foot controls are positioned for easy access.
- Robust, rigid frame increases service life.
- Base panels are removable for service ease.



### Two-Stage Inflation System

Supplies a large volume of air directed through the clamping jaws to seal the tire bead, while the tire at the valve stem is inflated through a clip-on air hose. A 60 psi safety limiter prevents over-inflation. Storage tray has ample space for adaptor and accessories.



# Bead Press System (BPS)



The Bead Press System speeds and eases clamping, lubricating, demounting and mounting the toughest wheel and tire combinations. Patented design uniquely locates the pressing forces over the center of the wheel and tire to ensure maximum service strength and rigidity.



**Tapered rollers assist in bead lubrication and bead lever placement to ease demounting.**



**A single bead press roller with rotating arm can quickly be used for mounting and demounting stiff sidewall tires. The roller may be locked to hold the tire sidewall, which maintains traction during the mounting sequence.**



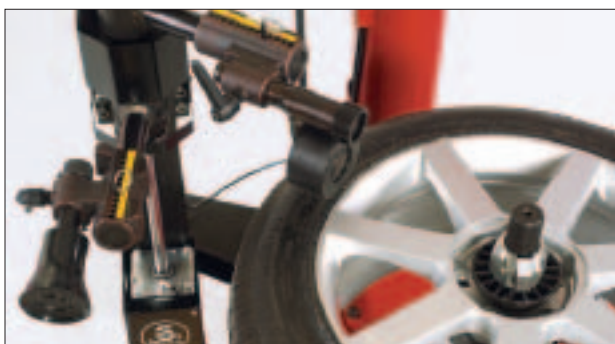
**When combined with the rotating arm, the fixed bead press arm adds additional bead pressing force to service the most extreme low-profile tires and deep drop-center alloy wheels.**



**Pneumatic wheel press cones and extension arm simplify external alloy wheel clamping when servicing low-profile tires.**



**Bottom roller disc assists in re loosening tire beads and lifting the tire up the wheel barrel during demounting.**



**The Bead Press System is PAX tire system capable by adding an optional kit. The PAX bead rollers are attached to the BPS and a center-shaft wheel clamping kit is also included.**

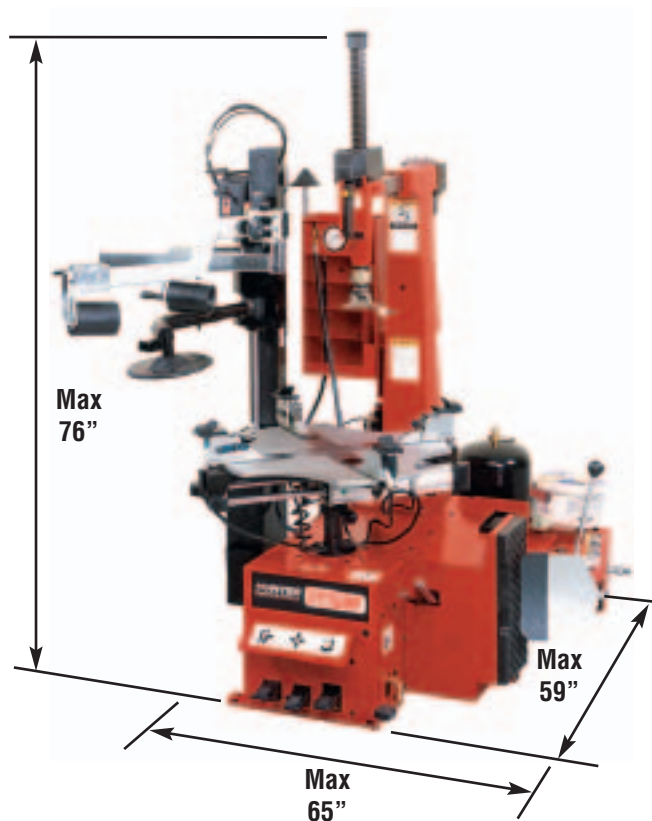
## TCX550 Specifications<sup>†</sup>

### Models TCX550EBPS (electric motor) and TCX550ABPS (air motor)

- Voltage 220V, 1 ph.  
NEMA Plug Type L6-20P
- Air Pressure Operating Range 110-145 psi
- Air Volume of Inflation Tank 4.75 gallons
- Wheel Clamping (nominal)
  - External Clamping (min-max) 12" - 24", 26" - 28" w/ Extension Jaws (Std)
  - Internal Clamping (min-max) 14" - 28"
- Table Rotation Speed  
7 rpm and 17 rpm (CW) 7 rpm (CCW)
- Tire Diameter 43.3" w/BPS
- Tire Width Maximum  
Table Raised Position  
~ 12.8" @ 26.6" Height  
Table Lowered Position  
~ 14.3" @ 23" Height
- Bead Loosener Width 17"
- Noise Level Less Than 74 dB
- Machine Weight 950 lbs.

### Standard Accessories:

- BPS Including:
  - Primary Travel/Lock Roller Arm
  - Secondary Fixed Roller Arm
  - Pressing Cones (Std and LT)
  - Pressing Cone Extension
- Quick Change Mount Head System
  - Steel Mount Head with Roller and Polymer Inserts Kit
  - Polymer Mount Head
- 4" Clamping Jaw Extensions
- Bead Levers (1) Std, (1) HM High-Performance
- Bead Lever Polymer Protectors
- Shovel Protectors Polymer
- Clamping Jaw Polymer Protectors



<sup>†</sup> Some dimensions, capacities and specifications may vary depending on tire and wheel configurations.

# Hunter Tire Changer Application Chart

- \* May require optional accessories**

**For additional information on winter tire accessories, see Form 4042T-Tire Changer Accessories brochure.**

**Сургут** (3462)77-98-35  
**Тверь** (4822)63-31-35  
**Томск** (3822)98-41-53  
**Тула** (4872)74-02-29  
**Тюмень** (3452)66-21-18  
**Ульяновск** (8422)24-23-59  
**Уфа** (347)229-48-12  
**Хабаровск** (4212)92-98-04  
**Челябинск** (351)202-03-61  
**Череповец** (8202)49-02-64  
**Ярославль** (4852)69-52-93

**Таджикистан** (992)427-82-92-69